

The Windsor (Birk)

1368 SQ FT

4411 6 Street NW



- 3 bedrooms, 2.5 bathrooms
- Large walk-in closet in the master bedroom
- Quartz countertops in kitchen
- Laminate flooring on main floor
- Tile flooring in bathrooms,
- Carpet with 8 pound underlay
- Cabinets raised to ceiling
- Full height ceramic backsplash
- Full fence
- Stone added to front elevation
- Stockton glass panels added to garage door
- Full height foundation under garage
- “Hotbox” above garage
- Pre-cast concrete steps
- Rough-in in the basement for future bathroom
- Oversized triple pane windows
- Decora style light switches and Decora outlets

Maple Crest Showhome

416 42 Avenue NW, Edmonton, AB.

587.521.7744

maplecrestsales@bedrockhomes.ca

Job # MPC-0-033810 Lot 61, Block 11, Plan 152-3661

Notes:

bedrockhomes.ca

VISIT US AT ANY OF OUR SHOWHOMES!

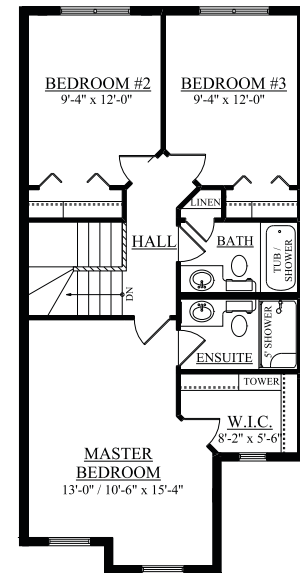
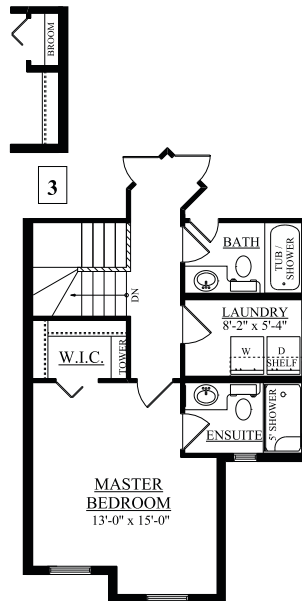
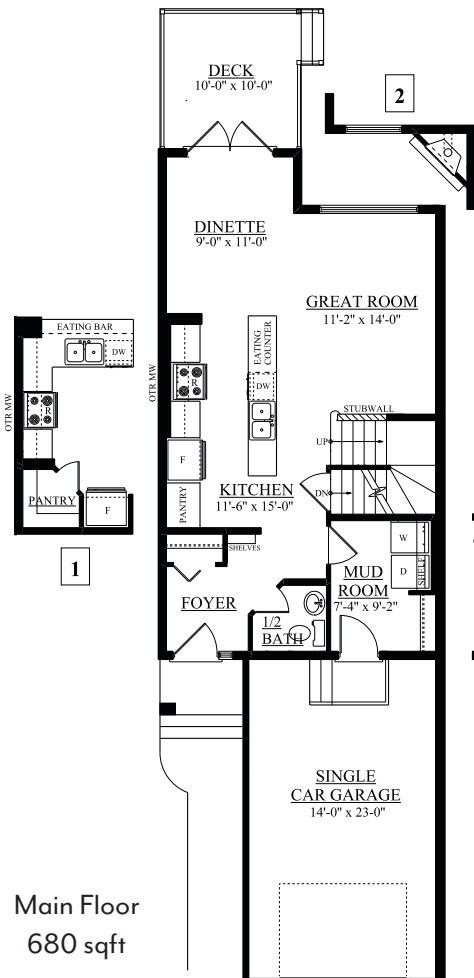
Monday - Thursday 3-8pm, Weekends & Holidays 12-5PM



The Windsor (Birk)

1368 SQ FT

4411 6 Street NW



Maple Crest Showhome

416 42 Avenue NW, Edmonton, AB.

587.521.7744

maplecrestsales@bedrockhomes.ca

Job # MPC-0-033810 Lot 61, Block 11, Plan 152-3661

bedrockhomes.ca

VISIT US AT ANY OF OUR SHOWHOMES!

Monday - Thursday 3-8pm, Weekends & Holidays 12-5PM

